

9" Square Retro-Adapter Frame and Mud Frame with 14" Square Anti-Entrapment Suction Outlet Cover

VGB Series

The AquaStar line of suction outlet covers, compliant with the new Virginia Graeme-Baker Pool and Spa Safety Act (ANSI/APSP 16-2011 and NSF 50-2008)

Features

For single or multiple drain use (see installation instructions)

Requires a minimum 3" sump depth

Single

Floor: 560 GPM at 2.1 fps

Wall: 300 GPM at 1.2 fps

Floor/wall: 394 GPM at 1.5 fps

84 square inch opening

Retrofit adapter frame easily and safely retrofits most brands' existing 9" mud frame with epoxy or screws or both; cover anchors into in-molded brass inserts in frame with four fine thread machine screws

Ideal for retrofitting over all existing sumps/frames up to 13" by anchoring directly into pool finish (plaster, tile, fiberglass, etc.) using four brass anchors and stainless screws in kit #BIK4

Trademarked VGB compliance button easily identifies VGB 2008 compliant cover from on deck and underwater

#316 stainless steel screws

Manufactured from superior UV-resistant engineered polymers

All components (cover, sump, screws) meet or exceed ANSI/APSP 16-2011 and NSF 50-2008 national standards and ASTM G154 UV testing exposure

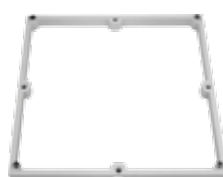
4 per case

NEW CONFIGURATION

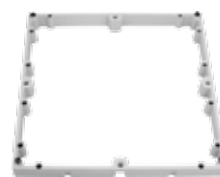
Retrofits over all existing sumps/frames up to 13"



Mud frame



Retro-adapter frame for 1/3" deep 9" square retrofits to 3/4"



Retro-adapter frame for 1" deep 9" square retrofits



Optional – extra screw holes for anchoring directly into pool finish using four brass anchor kit part # BIK4

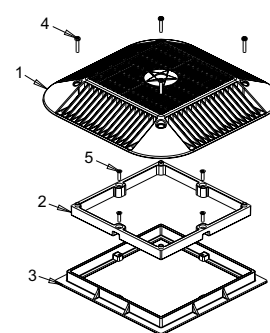
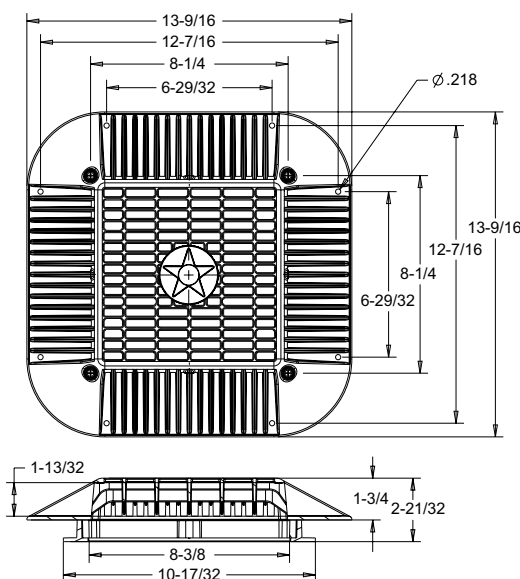


Part # 914xxx

STANDARD COLORS

	101		105
	102		108
	103		

VGB 2008 Compliant

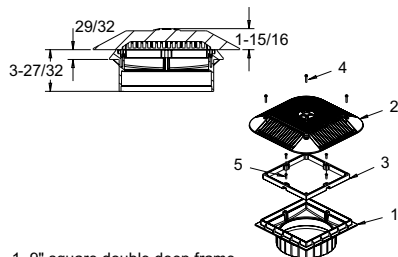


1. 14" x 14" to 9" x 9" square anti-entrapment cover
2. 14" x 14" to 9" x 9" square adapter
3. 9" square drain frame
4. 10-32 x 1" pan head phillips screw, ss, qty 4
5. #10 flat head phillips screw, qty 4
6. 10-24 x 1-1/4" flat head phillips screw, ss, qty 4

ADDITIONAL PRODUCT CONFIGURATIONS FOR 914xxx

Double-Deep Sump

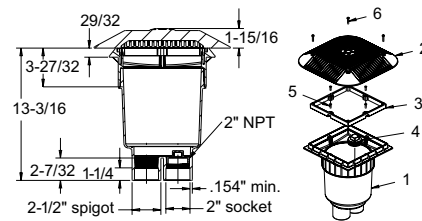
Part #
914xxxA
2 per case



1. 9" square double deep frame
2. 14" square anti-entrapment cover
3. 9" square to 14" square adapter
4. 10-32 x 1" pan head phillips screw, 316 ss, qty 4
5. #10 x 3/4" flat head phillips screw, 316 ss, qty 4

Dual-Port 2 1/2" Spigot x 2" Socket Deep PVC Sump

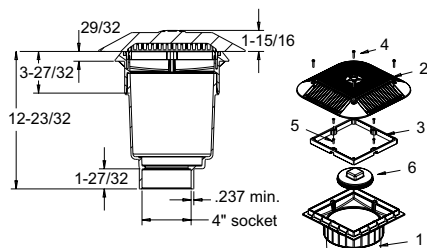
Part #
914xxxB
1 per case



1. Dual-port 2-1/2" spigot x 2" socket deep PVC sump
2. 14" square anti-entrapment cover
3. 9" square to 14" square adapter
4. 2" tapered pipe thread plug
5. #10 x 3/4" flat head phillips screw, 316 ss, qty 4
6. 10-32 x 1" pan head phillips screw, 316 ss, qty 4

4" Socket Deep PVC Sump

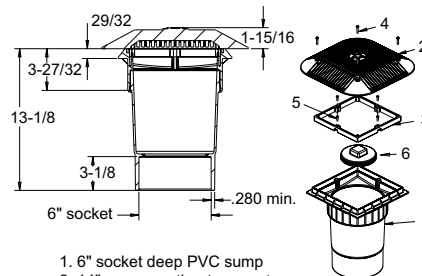
Part #
914xxxD
1 per case



1. 4" socket deep PVC sump
2. 14" square anti-entrapment cover
3. 9" square to 14" square adapter
4. 10-32 x 1" pan head phillips screw, 316 ss, qty 4
5. #10 x 3/4" flat head phillips screw, 316 ss, qty 4
6. 6" NPT plug

6" Socket Deep PVC Sump

Part #
914xxxF
1 per case



1. 6" socket deep PVC sump
2. 14" square anti-entrapment cover
3. 9" square to 14" square adapter
4. 10-32 x 1" pan head phillips screw, 316 ss, qty 4
5. #10 x 3/4" flat head phillips screw, 316 ss, qty 4
6. 6" NPT plug